



Please dispose of packaging for the product in a responsible manner. It is suitable for recycling. Help to protect the environment, take the packaging to the local amenity tip and place into the appropriate recycling bin.



Never dispose of electrical equipment or batteries in with your domestic waste. If your supplier offers a disposal facility please use it or alternatively use a recognised re-cycling agent. This will allow the recycling of raw materials and help protect the environment.

Sip Vacuum Cleaner 1400/20 Wet & Dry



07907

**FOR HELP OR ADVICE ON THIS PRODUCT PLEASE CONTACT YOUR DISTRIBUTOR,
OR SIP DIRECTLY ON:**

TEL: 01509500400

EMAIL: sales@sip-group.com or technical@sip-group.com

www.sip-group.com

Please read and fully understand the instructions in this manual before operation. Keep this manual safe for future reference.

DECLARATION OF CONFORMITY

Declaration of Conformity

We

SIP (Industrial Products) Ltd
Gelders Hall Road
Shepshed
Loughborough
Leicestershire
LE12 9NH
England

As the manufacturer's authorised representative within the EC
declare that the


Sip Vacuum Cleaner 1400/20 Wet & Dry - SIP Part No. 07907

Conforms to the requirements of the following directive(s), as indicated.

2006/95/EC	Low Voltage Directive
2014/30/EU	EMC Directive
2011/65/EU	RoHS

And the relevant standard(s), including:

EN 60335-2-2:2010+A11:2012+A1:2013
EN 60335-1:2012+A11:2014
EN 62233:2008
EN 55014-1:2006+A1:2009+A2:2011
EN 55014-2:1997+A1:2001+A2:2008
EN 61000-3-2:2014
EN 61000-3-3:2013

Signed: 

Mr P. Ippaso - Managing Director - SIP (Industrial Products) Ltd
Date: 29/11/2015.



<i>Page No.</i>	<i>Description</i>
4.	Safety Symbols Used Throughout This Manual
4.	Safety Instructions
7.	Guarantee
8.	Electrical Connection
9.	Technical Specifications
9.	Contents & Accessories
10.	Getting to Know Your Vacuum Cleaner
11.	Assembly Instructions
11.	Operating Instructions
14.	Maintenance
15.	Exploded Diagram
16.	Parts List
19.	Declaration of Conformity

SAFETY SYMBOLS USED THROUGHOUT THIS MANUAL



Danger / Caution: Indicates risk of personal injury and/or the possibility of damage.



Warning: Risk of electrical injury or damage!



Note: Supplementary information.

SAFETY INSTRUCTIONS



IMPORTANT: Please read the following instructions carefully, *failure to do so could lead to serious personal injury and / or damage to the vacuum cleaner.*

When using the vacuum cleaner, basic safety precautions should always be followed to reduce the risk of fire, electric shock and personal injury.

Read all these instructions before operating the tool and save this user manual for future reference.

SIP recommends that this vacuum cleaner should *not* be modified or used for any application other than that for which it was designed. It is designed to vacuum carpets, floors etc. and the collection of water. If you are unsure of its relative applications do not hesitate to contact us and we will be more than happy to advise you.

KNOW YOUR VACUUM CLEANER: Read and understand the owner's manual and labels affixed to the vacuum cleaner. Learn its applications and limitations, as well as the potential hazards specific to this vacuum cleaner.

KEEP WORK AREA CLEAN AND WELL LIT: Cluttered work benches and dark areas invite accidents; Floors must not be slippery due to oil, water or sawdust etc.

DO NOT USE THE VACUUM CLEANER IN DANGEROUS ENVIRONMENTS: Do not expose the vacuum cleaner to rain. Provide adequate space surrounding the work area. Do not use in environments with a potentially explosive atmosphere.

KEEP CHILDREN AND UNTRAINED PERSONNEL AWAY FROM THE WORK AREA: All visitors should be kept at a safe distance from the work area.

STORE TOOLS SAFELY WHEN THEY ARE NOT IN USE: All tools should be stored in a dry, locked cupboard wherever possible and out of the reach of children.



PROTECT YOURSELF FROM ELECTRIC SHOCK: When working with power tools, avoid

NOTES

PARTS LIST

Ref. No.	Description	SIP Part No.	Ref. No.	Description	SIP Part No.
1.	Handle	PW08-00460	14.	Castor	PW08-00476
2.	Motor top cover	PW08-00461	15.	Attachment holder	PW08-00474
3.	Switch	PW08-00462	16.	Collection bag	PW08-00477
4.	Motor base cover	PW08-00463	17.	Mains lead clamp	PW08-00479
5.	Motor upper seal ring	PW08-00464	18.	Mains lead	PW08-00480
6.	Motor	PW08-00465	19.	Capacitor	PW08-00481
7.	Motor lower seal ring	PW08-00466	20.	Extension tube	PW08-00482
8.	Air inlet	PW08-00467	21.	Foam filter	PW08-00483
9.	Float stop	PW08-00468	22.	Crevice tool	PW08-00484
10.	Filter basket	PW08-00469	23.	Hose 1.5 metre	PW08-00485
11.	Clamp	PW08-00470	24.	Brush	PW08-00487
12.	Hose connector	PW08-00471	N/A.	Motor brush (pair)	PW08-00491
13.	Container	PW08-00472			

Optional Extras

Cartridge filter	PW08-00489	
Filter lock	PW08-00490	

SAFETY INSTRUCTIONS...cont

contact with any earthed items (e.g. pipes, radiators, hobs and refrigerators, etc.). It is advisable wherever possible to use an RCD (residual current device) at the mains socket.

STAY ALERT: Always watch what you are doing and use common sense. Do not operate a machine when you are tired or under the influence of alcohol or drugs.

DISCONNECT THE VACUUM CLEANER FROM THE MAINS SUPPLY: When not in use, before servicing, emptying the water container and when changing accessories such as bags etc.

AVOID UNINTENTIONAL STARTING: Make sure the switch is in the **OFF** position before connecting the vacuum cleaner to the mains supply.

NEVER LEAVE THE VACUUM CLEANER RUNNING / CONNECTED WHILST UNATTENDED: Turn off the vacuum cleaner and disconnect it from the mains supply between jobs. Do not leave the vacuum cleaner until it comes to a complete stop.

DO NOT ABUSE THE MAINS LEAD: Never attempt to move the vacuum cleaner by the mains lead or pull it to remove the plug from the mains socket. Keep the mains lead away from heat, oil and sharp edges. If the mains lead is damaged, it must be replaced by the manufacturer or its service agent or a similarly qualified person in order to avoid unwanted hazards.

CHECK FOR DAMAGED PARTS: Before every use of the vacuum cleaner, any part that is damaged should be carefully checked to determine that it will operate correctly and perform its intended function. Check for alignment of moving parts, free running of moving parts, breakage of parts, and any other conditions that may affect its operation. A guard or other part that is damaged should be correctly repaired or replaced by an authorised service centre unless otherwise indicated in this instruction manual. Have defective switches replaced by an authorised service agent. Do not use the tool if the switch does not turn it on and off.

USE ONLY RECOMMENDED ACCESSORIES: Consult this user manual for recommended accessories. Follow the instructions that accompany the accessories. The use of improper accessories may cause hazards and will invalidate any warranty you may have.

DO NOT OVERREACH: Keep proper footing and balance at all times.

USE THE RIGHT MACHINE: Do not use the vacuum cleaner or the attachment to do a job for which it was not designed.

DO NOT OVERLOAD THE VACUUM CLEANER: It will do the job better and more safely at the rate which it was designed.

DO NOT EXPOSE THE VACUUM CLEANER TO RAIN: Water entering the motor housing will greatly increase the risk of electric shock.

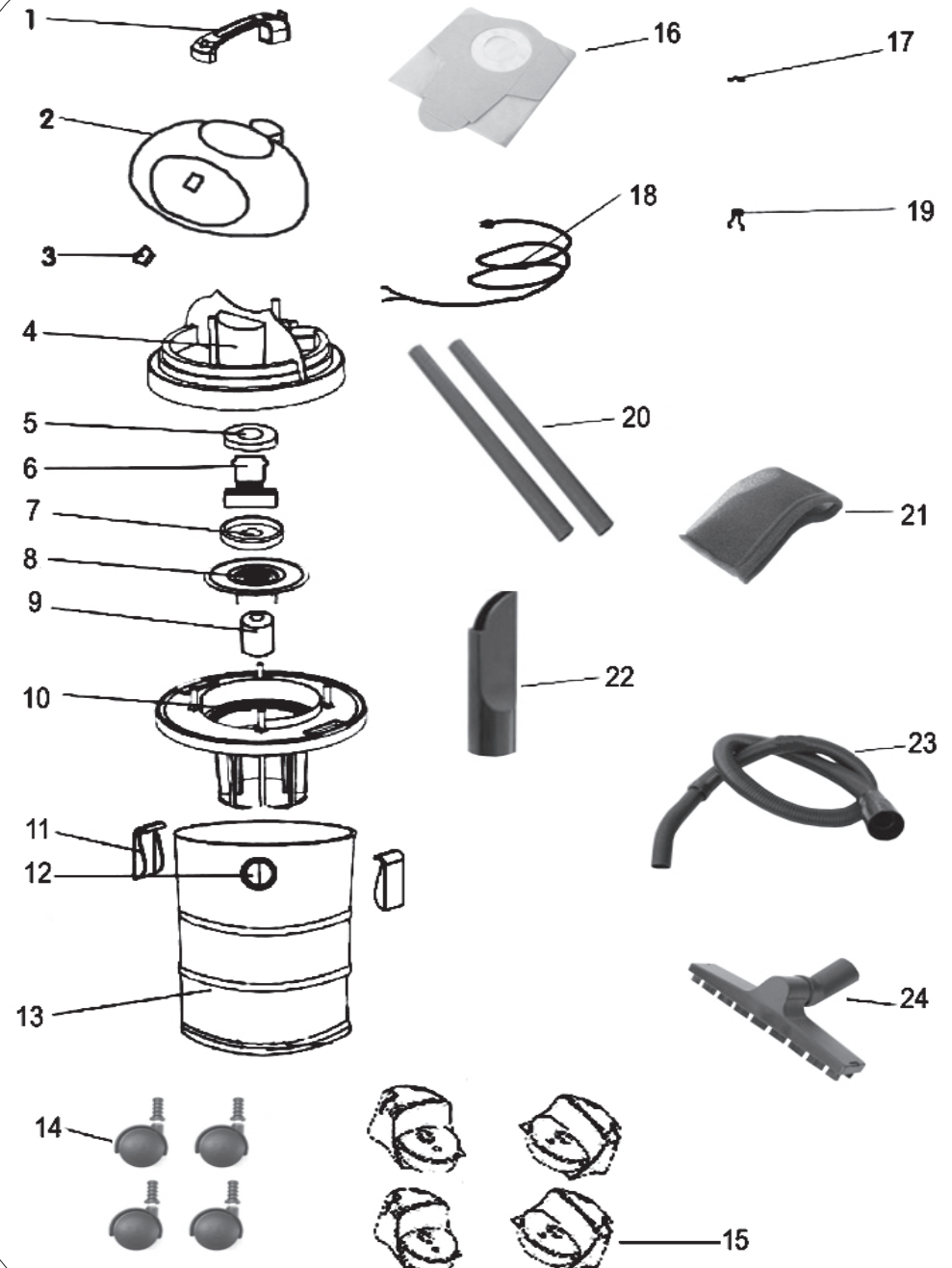
- Stop operation immediately if you notice anything abnormal.
- Be alert at all times, especially during repetitive, monotonous operations. Don't be lulled into a false sense of security.
- Do not modify the vacuum cleaner to do tasks other than those intended.

SAFETY INSTRUCTIONS....cont

- Never collect hot objects such as dust or ashes etc.
- Never operate the vacuum cleaner without the hose attached securely and correctly fitted.
- If the vacuum cleaner is used in a place of work all rules and laws etc. relating to the use of portable electrical appliances should be followed.
- The motor housing contains a high speed fan that can amputate fingers, grab loose clothing and neckties, propel dust and chips of wood at high velocities. **DO NOT OPERATE WITHOUT ALL COVERS / GUARDS AND PARTS IN PLACE.**
- Do not attempt to clean the vacuum cleaner, or empty the container when the power is **ON**. Turn the vacuum cleaner **OFF** and disconnect the mains lead from the power supply and allow the internal fan to come to a complete stop prior to any adjustment, cleaning or maintenance.
- Static shocks are common in dry areas or when the relative humidity of the air is too low, The use of a humidifier in the work place will help raise the relative humidity, and may reduce static shocks.
- **DO NOT** use the vacuum cleaner near flammable or combustible liquids, gases, petrol, or any other types of fuels or liquid.
- Be aware what is likely to get sucked into the vacuum cleaner, avoid vacuuming metal objects such as nails etc. Internal damage could occur if this rule is not followed.
- Always use the vacuum cleaner on a stable, level surface.
- **DO NOT** use the vacuum cleaner without the collection bag and foam filter fitted.
- Always ensure the mains supply matches what is written on the specification plate of the vacuum cleaner (or in this manual).
- Periodically remove the hose to check that the inlet to the vacuum cleaner is not getting restricted.
- When the collection bag is full it must be replaced, this is a non serviceable part.
- This vacuum cleaner is only for use with water and not chemicals or other substances that could damage the internal seals etc.
- This vacuum cleaner will not recirculate the water, it is not designed to clean carpets or similar, wet vacuuming can only be used to collect water which has been spilt etc.
- Never use this vacuum cleaner to collect water where aquatic life is present such as in domestic, or commercial ponds, fish tanks, or similar.

Understand the operating environment; Before each use the operator should assess, understand and where possible reduce the specific risks and dangers associated with the operating environment. Bystanders should also be made aware of any risks associated with the operating environment.

EXPLODED DIAGRAM



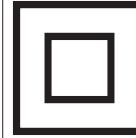
MAINTENANCE

The vacuum cleaner needs very little maintenance; A common sense approach should give you years of good service.

- Clean or replace the foam filter on a regular basis.
- Empty and clean the container regularly.
- Ensure that the hose, crevice tool and brush are kept clear from debris on a regular basis.
- Always use the foam filter and collection bag so it keeps the motor free from contamination.
- The collection bag is non cleanable, once full it must be replaced.
- The motor housing has no user serviceable parts.

If your foam filter or collection bag becomes damaged they must be replaced.

SAFETY INSTRUCTIONS...cont



These vacuum cleaners are double insulated; This means the operator is separated from the tool's electrical system by two complete sets of electrical insulation. This extra layer of insulation is intended to protect the user from electrical shock due to a break in the wiring insulation. All exposed metal parts are isolated from the internal metal motor components with protecting insulation. Double insulated tools do not need to be grounded (earthed). Servicing of a tool with double insulation requires extreme care and knowledge of the system and should be performed only by a suitably qualified person.



Caution: The warnings and cautions mentioned in this user manual can not cover all possible conditions and situations that may occur. It must be understood by the operator that common sense and caution are factors which cannot be built into this product, but must be applied.

GUARANTEE

The SIP vacuum cleaner is covered by a 12 month parts and labour warranty covering failure due to manufacturers defects. This does not cover failure due to misuse or operating the vacuum cleaner outside the scope of this manual - any claims deemed to be outside the scope of the warranty may be subject to charges including, but not limited to parts, labour and carriage costs.

Consumable items such as the foam filter and collection bag are not covered by the warranty.

In the unlikely event of warranty claims, contact your distributor as soon as possible.



Note: Proof of purchase will be required before any warranty can be honoured.

ELECTRICAL CONNECTION



These vacuum cleaners are double insulated. This means the operator is separated from the tool's electrical system by two complete sets of electrical insulation.

These vacuum cleaners are fitted with a standard UK type 230v ~ plug. Before using the tool inspect the cable and plug to ensure that neither are damaged. If any damage is visible have the tool inspected / repaired by a suitably qualified person. If it is necessary to replace the plug a heavy duty impact resistant plug would be preferable.

The wires for the plug are coloured in the following way:

Blue	Neutral
Brown	Live

As the colours of the wires may not correspond with the markings in your plug, proceed as follows:

- The wire which is coloured blue, must be connected to the terminal marked with N or coloured black.
- The wire which is coloured brown, must be connected to the terminal, which is marked L or coloured red.
- Always secure the wires in the plug terminal carefully and tightly. Secure the cable in the cord grip carefully.



Warning: Never connect live or neutral wires to the earth terminal of the plug. Only fit an approved plug with the correct rated fuse. If in doubt consult a qualified electrician.



Note: Always make sure the mains supply is of the correct voltage and the correct fuse protection is used. In the event of replacing the fuse always replace the fuse with the same value as the original.



Note: If an extension lead is required in order to reach the mains supply; ensure that this too is rated for the correct voltage and fuse rating.



Note: The cross section of the extension lead should be checked so that it is of sufficient size so as to reduce the chances of voltage drops.

OPERATING INSTRUCTIONS...cont



Note: The foam filter **must** be fitted and the collection bag **must** be removed before using it for wet vacuuming. Failure to adhere to this could damage the motor and void any warranty you may have.



Note: If you have purchased and fitted the cartridge filter and filter lock (optional extras), they must be removed and the foam filter re-fitted.



Note: Due to the float stop, the vacuum cleaner will never collect the full container capacity, water collection (approx.) 12 litres.

- ⇒ Undo the 2 clamps on each side of the container, lift the motor housing off and remove the collection bag.
- ⇒ Refit the motor housing and secure both clamps.
- ⇒ Connect the hose to the hose connector.
- ⇒ Connect the extension pipes to the hose (if required).
- ⇒ Connect either the brush or crevice tool to the extension pipe (if required).
- ⇒ Press the (I) button to start the vacuum cleaner.
- ⇒ Once the container is at capacity it will stop collecting the water and the motor sound will change, press the (O) button to stop the vacuum cleaner and disconnect from the mains supply.
- ⇒ Undo the two clips and drain the water out of the container.



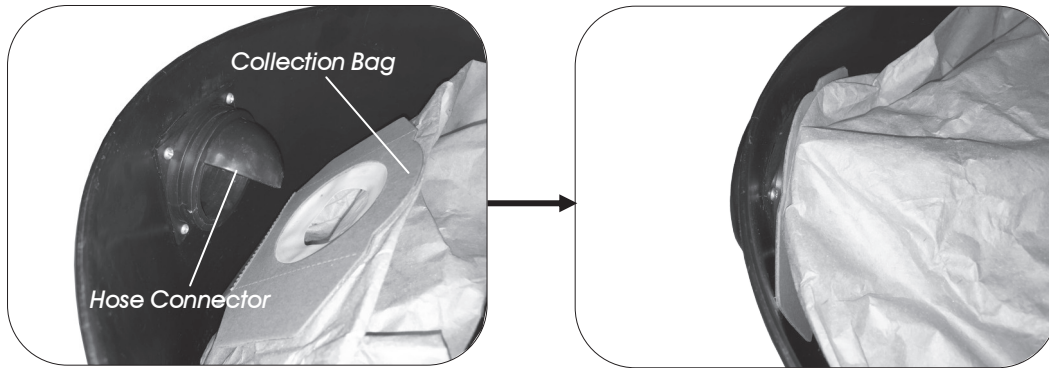
Note: Do not allow the vacuum to run for long after the float has stopped suction.



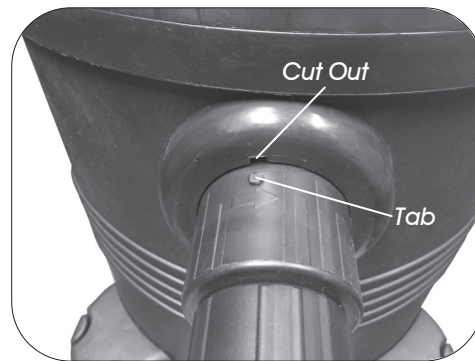
- ⇒ When not in use, store the extension pipes, brush and crevice tool on to the attachment holders (see left).

OPERATING INSTRUCTIONS...cont

- ⇒ Push the collection bag over the back of the hose connector (see below).
- ⇒ Refit the motor housing and secure both clamps.



- ⇒ Line up the tab on the hose with the cut out on the hose connector, push the hose into the hose connector and turn clockwise to lock into position.



Note: Do not overtighten the hose to avoid turning it past the locked position.

- ⇒ Connect the extension pipes to the hose (if required).
- ⇒ Connect either the brush or crevice tool to the extension pipe (if required).
- ⇒ Press the (I) button to start the vacuum cleaner.
- ⇒ Press the (O) button to stop the vacuum cleaner.

WET VACUUMING



Note: When wet vacuuming; the machine can only collect water, it will not recirculate the water to clean carpets or similar. It is only for use with water and not chemicals or other substances that could damage the internal seals etc.

TECHNICAL SPECIFICATIONS

SIP Code	07907
Description	Sip Vacuum Cleaner 1400/20 Wet & Dry
Input Voltage	230V ~ 50hz
Power	1400 W
Airflow	58 l/s
Hose Length	1.5 Metres
Container Capacity	20 Litres
Water Capacity (Approx.)	12 Litres

CONTENTS & ACCESSORIES

Vacuum Cleaner	1.5mtr Hose	Extension Pipe (x2)
Castor (x4)	Attachment Holder (x4)	Attachment Holder Screw (x4)
Collection Bag	Brush	Crevice Tool
Foam Filter		



Note: If any of the above are missing or damaged, contact your distributor immediately.

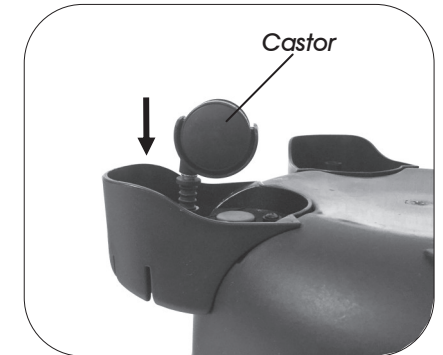
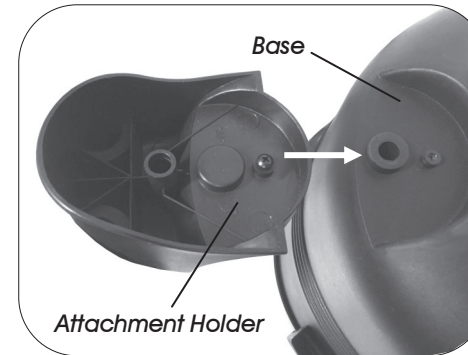
GETTING TO KNOW YOUR VACUUM CLEANER



Ref. No.	Description	Ref. No.	Description
1.	Hose	6.	Extension Pipe
2.	On/Off Switch	7.	Attachment Holder
3.	Carry Handle	8.	Crevice Tool
4.	Motor Housing	9.	Brush
5.	Clamp		

ASSEMBLY INSTRUCTIONS

- ⇒ Fit the attachment holder on to the base of the container (below left), and secure with a screw.
- ⇒ Repeat the process for the other three attachment holders.
- ⇒ Push the four castors into the attachment holders (below right), be careful not to apply too much pressure.



OPERATING INSTRUCTIONS

DRY VACUUMING



Note: The foam filter and collection bag must be fitted at all times. Failure to adhere to this could damage the motor and will void any warranty you may have.

- ⇒ Undo the 2 clamps on each side of the container and lift the motor housing from the container.
- ⇒ Fit the foam filter over the filter basket (**Note:** a cartridge filter and filter lock can be fitted as optional extras see spare parts pg16).

