

80 Litre Suction Oil Drainer



Please dispose of packaging for the product in a responsible manner. It is suitable for recycling. Help to protect the environment, take the packaging to the local amenity tip and place into the appropriate recycling bin.



03711

**FOR HELP OR ADVICE ON THIS PRODUCT PLEASE CONTACT YOUR DISTRIBUTOR,
OR SIP DIRECTLY ON:**

TEL: 01509500400

EMAIL: sales@sip-group.com or technical@sip-group.com

www.sip-group.com

Please read and fully understand the instructions in this manual before operation. Keep this manual safe for future reference.

DECLARATION OF CONFORMITY

Declaration of Conformity

We

SIP (Industrial Products) Ltd
Gelders Hall Road
Shepshed
Loughborough
Leicestershire
LE12 9NH
England

As the manufacturer's authorised representative within the EC
declare that the


80Ltr Mobile Oil Drainer & Suction - SIP Part No. 03711

Conforms to the requirements of the following directive/s, as indicated.

2006/42/EC Machinery Directive

And The Relevant Harmonised Standard/s, including

EN 121000:2010

Signed: 

Mr P. Ippaso - Managing Director - SIP (Industrial Products) Ltd
Date: 28/12/2015.



<i>Page No.</i>	<i>Description</i>
4.	Safety Symbols Used Throughout This Manual
4.	Safety Instructions
6.	Guarantee
6.	Contents & Accessories
6.	Technical Specifications
7.	Getting to Know Your Oil Drainer
8.	Assembly Instructions
8.	Operating Instructions
13.	Maintenance
13.	Troubleshooting
14.	Exploded Drawing
15.	Parts List
19.	Declaration of Conformity

SAFETY SYMBOLS USED THROUGHOUT THIS MANUAL



Danger / Caution: Indicates risk of personal injury and/or the possibility of damage.



Note: Supplementary information.

SAFETY INSTRUCTIONS



IMPORTANT: Please read the following instructions carefully, *failure to do so could lead to serious personal injury and / or damage to the Oil Drainer.*

When using your oil drainer, basic safety precautions should always be followed to reduce the risk of personal injury and / or damage to the oil drainer.

Read all of these instructions before operating the oil drainer and save this user manual for future reference.

The oil drainer should **not** be modified or used for any application other than that for which it was designed.

The oil drainer was designed for the removal of oil from engines, gearboxes and similar.

If you are unsure of its relative applications do not hesitate to contact us and we will be more than happy to advise you.

Before operating the oil drainer always check no parts are broken, that no oil is leaking and that no parts are missing.

Always operate the oil drainer safely and correctly.

KNOW YOUR OIL DRAINER: Read and understand the owner's manual and labels affixed to the oil drainer. Learn its applications and limitations, as well as the potential hazards specific to it.

KEEP CHILDREN AND UNTRAINED PERSONNEL AWAY FROM THE WORK AREA: All visitors should be kept at a safe distance from the work area; never allow untrained persons to operate the oil drainer.

STAY ALERT: Always watch what you are doing and use common sense.

NEVER LEAVE THE OIL DRAINER UNATTENDED: When in use / under an engine or gearbox.

HAVE YOUR OIL DRAINER REPAIRED BY A QUALIFIED PERSON: The oil drainer is in accordance with the relevant safety requirements. Repairs should only be carried out by qualified persons using original spare parts, otherwise this may result in considerable danger to the user and void the warranty.

NOTES

PARTS LIST...cont

Ref. No.	Description	SIP Part No.	Ref. No.	Description	SIP Part No.
32HC-2107.	Knob	HY02-00292	32HC-2604.	Screw	HY02-00298
32HC-2201.	Extraction tube holder	HY02-00319	32HC-2701.	Side handle	HY02-00299
32HC-2202.	Oil cup	HY02-00320	32HC-2702.	Screw	HY02-00300
32HC-2301.	Extraction nozzle (Ø8x700mm nylon)	HY02-00321	32HC-2703.	Handle sleeve	HY02-00301
32HC-2302.	Extraction nozzle (Ø6x700mm nylon)	HY02-00322	32HC-2801.	Handle	HY02-00302
32HC-2303.	Extraction nozzle (Ø5x700mm nylon)	HY02-00323	32HC-2802.	Handle protection	HY02-00303
32HC-2304.	Extraction nozzle (Ø7x1000mm nylon)	HY02-00324	32HC-3501.	Cover	HY02-00328
32HC-2305.	Extraction nozzle (Ø6x700mm copper)	HY02-00325	32HC-3502.	Cover plate	HY02-00329
32HC-2306.	Extraction nozzle (Ø5x700mm copper)	HY02-00326	32HC-3601.	Vacuum gauge	HY02-00330
32HC-2401.	Connector (BMW & VW)	HY02-00327	32HC-3602.	Connector	HY02-00331
32HC-2501.	Oil tray	HY02-00293	32HC-3603.	T-connector	HY02-00332
32HC-2502.	Strainer	HY02-00294	32HC-3604.	Straight connector	HY02-00333
32HC-2601.	Connector	HY02-00295	32HC-3605.	Connector	HY02-00334
32HC-2602.	Connector	HY02-00296	32HC-3606.	Nut	HY02-00335
32HC-2603.	O-ring	HY02-00297	32HC-3607.	Elbow	HY02-00336

SAFETY INSTRUCTIONS...cont

DANGER! Check that the oil drainer is in sound condition and good working order before each use; Take immediate action to repair or replace damaged parts.

WARNING! Only operate on a level and stable surface and never use on soft ground where the oil drainer is likely to "sink" whilst in operation.

NEVER STAND ON THE OIL DRAINER: The oil drainer is not designed for this purpose.

DO NOT dismantle or tamper with the oil drainer, this will invalidate the warranty. If a problem with the oil drainer is experienced or suspected stop using the oil drainer **immediately** and contact your distributor for repair.

- Regularly inspect the oil drainer, ensuring that it is in good working order and condition.
- Always ensure that the work area is clean and tidy, free from unrelated materials and has adequate lighting.
- Keep hands, limbs etc. clear of moving parts.
- Use only in a well ventilated area.
- **DO NOT** start the engine whilst using the oil drainer.
- Be careful with oil that has been extracted, the temperature is high between 40° - 60°c.
- Contact your local authority on how / where to dispose of the oil.
- Clean and stow the oil drainer correctly, ensure the storage area is dry.
- Failure to follow the warnings in this manual, may result in personal injury and/or property damage.
- **DO NOT** direct air from the air hose at yourself or others.
- **DO NOT** move the oil drainer by the hose, or pull the hose from the air supply.
- When not in use disconnect from the air supply and store in a safe and dry area.
- **DO NOT** allow untrained persons to operate the oil drainer.
- **DO NOT** put attachments near to your face (especially eyes, ears, etc.) and do not direct the hose at other persons or animals.
- **DO NOT** exceed the recommended air pressure.
- **DO NOT** smoke or have a naked flame near the oil drainer.
- **DO NOT** pollute the environment by allowing uncontrolled discharge of waste oil.
- Understand the operating environment; Before each use the operator should assess, understand and where possible reduce the specific risks and dangers associated with the operating environment. Bystanders should also be made aware of any risks associated with the operating environment.



When using the oil drainer always ensure the operator as well as those in the area wear eye protection.



CAUTION: The warnings and cautions mentioned in this user manual can not cover all possible conditions and situations that may occur. It must be understood by the operator that common sense and caution are factors which cannot be built into this product, but must be applied.

GUARANTEE

This SIP oil drainer is covered by a 12 month parts and labour warranty covering failure due to manufacturers defects. This does not cover failure due to misuse or operating the oil drainer outside the scope of this manual - any claims deemed to be outside the scope of the warranty may be subject to charges including, but not limited to parts, labour and carriage costs.

Consumable items such as hoses & nozzles etc. are not covered by the warranty.

In the unlikely event of warranty claims, contact your distributor as soon as possible.



Note: Proof of purchase will be required before any warranty can be honoured.

CONTENTS & ACCESSORIES

Oil Drainer/Suction Manual Oil Tray Extraction Nozzles (x6)



Note: If any of the above are missing or damaged, contact your distributor immediately.

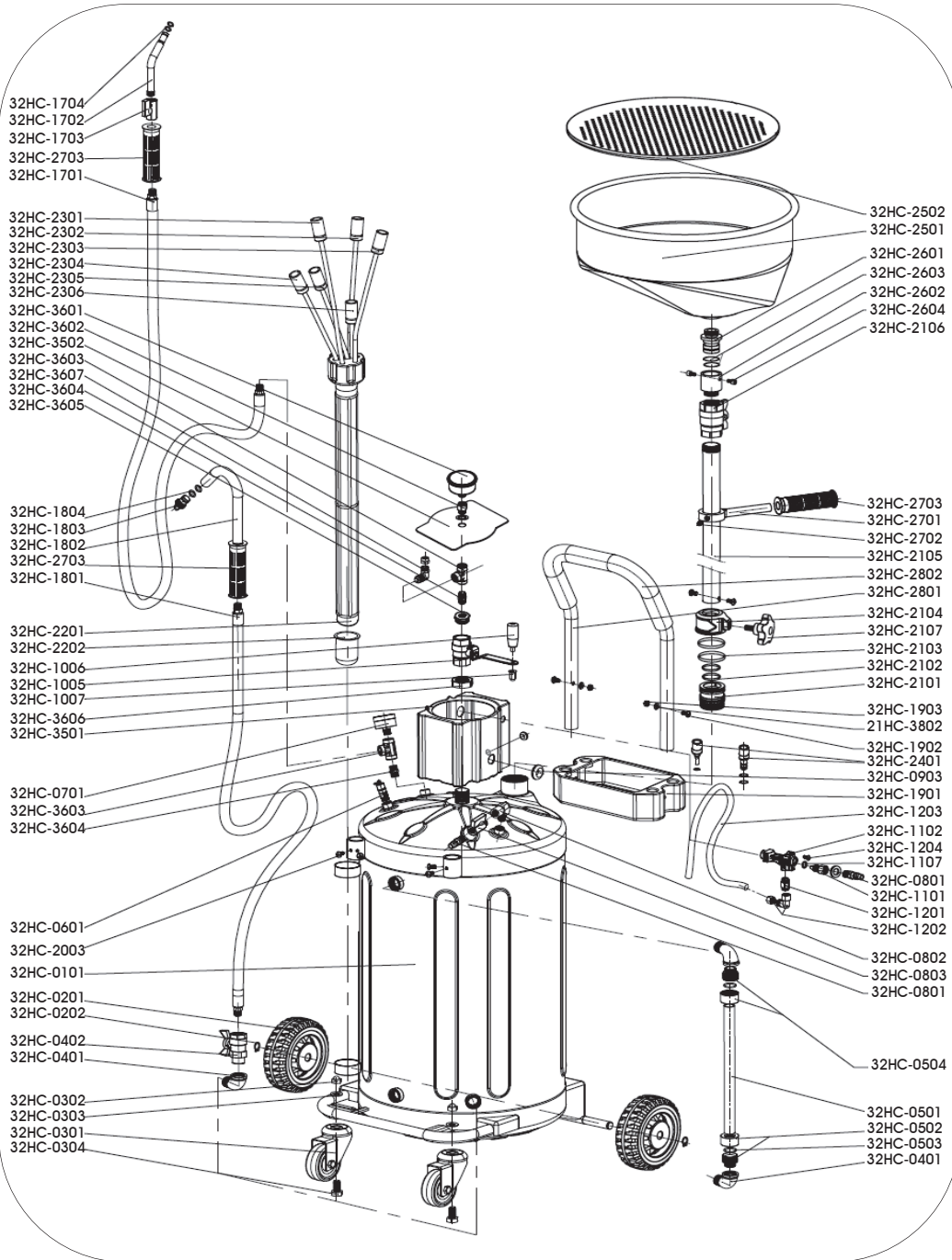
TECHNICAL SPECIFICATIONS

<i>Tank Capacity</i>	80 Litres	<i>Air Inlet Connection</i>	1/4"
<i>Collection Bowl Capacity</i>	20 Litres	<i>Minimum Height</i>	1190mm
<i>Air Inlet Pressure</i>	6-8 Bar	<i>Maximum Height</i>	1810mm
<i>Air Consumption</i>	150L/min	<i>Oil Discharge Pressure</i>	0.7 - 1 Bar
<i>Oil Temperature Range (Engine oil)</i>	40 - 60°C	<i>Extraction / Discharge Hose</i>	2 Metres

PARTS LIST

Ref. No.	Description	SIP Part No.	Ref. No.	Description	SIP Part No.
21HC-3802.	Gasket	HY02-00260	32HC-1102.	<i>Vacuum air inlet valve</i>	HY02-00309
32HC-0101.	Tank	HY02-00261	32HC-1107.	O-ring	HY02-00310
32HC-0201.	Wheel	HY02-00262	32HC-1201.	Valve	HY02-00311
32HC-0202.	Wheel clip	HY02-00263	32HC-1202.	Elbow	HY02-00312
32HC-0301.	Castor	HY02-00264	32HC-1203.	Hose	HY02-00313
32HC-0302.	Nut	HY02-00265	32HC-1204.	Screw	HY02-00314
32HC-0303.	Gasket	HY02-00266	32HC-1701.	Extraction hose	HY02-00315
32HC-0304.	Bolt	HY02-00267	32HC-1702.	Extraction nozzle	HY02-00316
32HC-0401.	Elbow	HY02-00268	32HC-1703.	Extraction valve	HY02-00317
32HC-0402.	Lower valve	HY02-00269	32HC-1704.	O-ring	HY02-00318
32HC-0501.	Tank gauge	HY02-00270	32HC-1801.	Discharge hose	HY02-00278
32HC-0502.	Lower gauge fitting	HY02-00271	32HC-1802.	Discharge nozzle	HY02-00279
32HC-0503.	O-ring	HY02-00272	32HC-1803.	Nozzle stopper	HY02-00280
32HC-0504.	Upper gauge fitting	HY02-00273	32HC-1804.	O-ring	HY02-00281
32HC-0601.	Safety valve	HY02-00274	32HC-1901.	Tool tray	HY02-00282
32HC-0701.	Extraction gauge	HY02-00275	32HC-1902.	Handle bolt	HY02-00283
32HC-0801.	Male bayonet 1/4"	05136	32HC-1903.	Handle nut	HY02-00284
32HC-0802.	Elbow	HY02-00276	32HC-2003.	Screw	HY02-00285
32HC-0803.	Air inlet valve	HY02-00277	32HC-2101.	Seat	HY02-00286
32HC-0903.	Bushing	HY02-00304	32HC-2102.	O-ring	HY02-00287
32HC-1005.	Vacuum valve	HY02-00305	32HC-2103.	O-ring	HY02-00288
32HC-1006.	Lever	HY02-00306	32HC-2104.	Brake sleeve	HY02-00289
32HC-1007.	Nut	HY02-00307	32HC-2105.	Height adjustment pole	HY02-00370
32HC-1101.	Bolt	HY02-00308	32HC-2106.	Upper valve	HY02-00291

EXPLODED DRAWING



GETTING TO KNOW YOUR OIL DRAINER



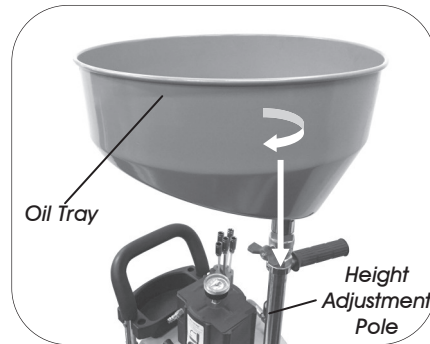
GETTING TO KNOW YOUR OIL DRAINER....cont

Ref. No.	Description	Ref. No.	Description
1.	Tank	9.	Vacuum Gauge
2.	Extraction Nozzle Holder	10.	Extraction Nozzle
3.	Air Pressure Gauge	11.	Discharge Gun
4.	Side Handle	12.	Air Inlet Valve
5.	Height Adjustment Pole	13.	Tank Gauge
6.	Upper Valve	14.	Lower Valve
7.	Oil Tray	15.	Vacuum Air Inlet Valve
8.	Extraction Gun	16.	Vacuum Valve

ASSEMBLY INSTRUCTIONS

There is very little assembly required, follow the instructions below.

- Screw the oil tray onto the height adjustment pole, turn it clockwise to secure it.
- Check and make sure all pipes are secure and tight.



OPERATING INSTRUCTIONS

OIL COLLECTION

- Raise the engine/vehicle using the appropriate lifting equipment.
- Locate the oil drain plug/bolt on the engine, push the oil drainer so its underneath the oil drain plug/bolt.

MAINTENANCE

- Periodically re-check the hoses, valves nuts, bolts and screws, make sure they are tight if not retighten.
- You must drain the waste oil before storing the oil drainer away, this will prevent the inside of the tank corroding.
- Store in a clean and dry location.
- All repairs must be completed by a qualified technician.

TROUBLESHOOTING

Vacuum gauge not working:

- Check the air pressure on the compressor, it should be between 6 - 8 bar.
- Make sure the correct valves are open.
- Check the vacuum to tank seal.

Reading shown on the vacuum gauge but the machine will not extract:

- Check the o-rings on the extraction gun.
- Ensure the extraction valve is open.
- Ensure the extraction pipe is not blocked or trapped.
- Oil temperature is too low.

OPERATING INSTRUCTIONS...cont

- Ensure the upper valve, lower valve and air inlet valve are all closed (see pg11 right pic).
- Connect the air supply onto the air inlet valve, but do not open the air inlet valve yet.
- Hook the discharge gun over a barrel/container and open the lower valve.
- Slowly turn the air inlet valve on until the safety valve vents at 1 bar, at this point turn the air inlet valve off.
- The oil should now start to transfer to the barrel/container.
- Once all the oil has transferred to the barrel/container, turn the lower valve off and remove the discharge gun.



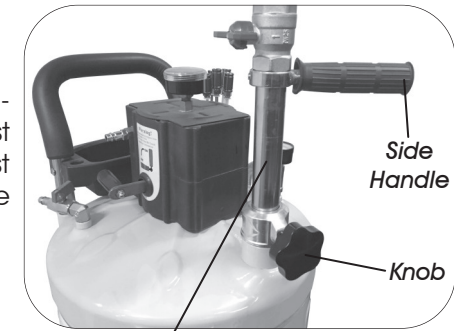
Note: The discharge gun must be held whilst transferring the oil, this will stop the oil spattering.



Note: Contact your local authority on how / where to dispose of the waste oil.

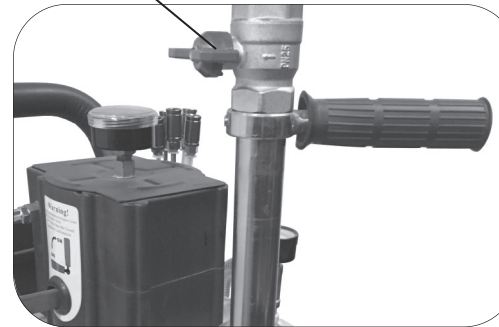
OPERATING INSTRUCTIONS...cont

- Loosen the knob on the side of the height adjustment pole; Use the side handle to adjust the height adjustment pole so its sitting just below the oil drain plug/bolt & retighten the knob.



Height Adjustment Pole

Upper Valve



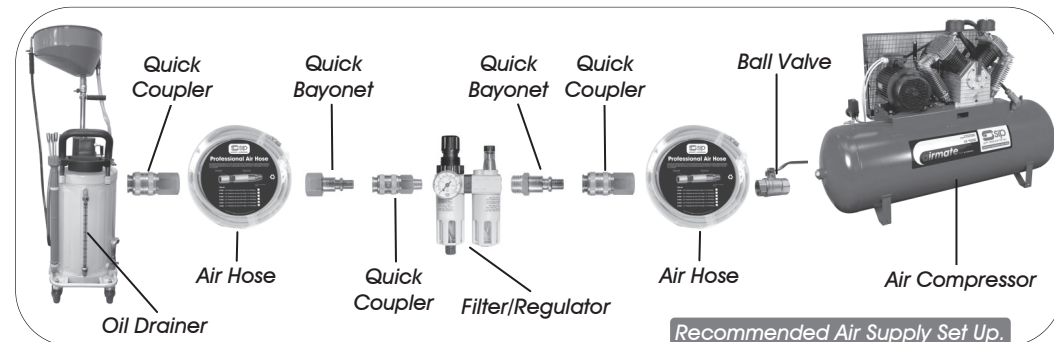
- Open the upper valve located under the oil tray then remove the oil drain plug/bolt.
- Once all the oil has been drained refit the oil drain plug/bolt.

CONNECTING TO THE AIR SUPPLY

- You will require an air pressure between 6-8 bar.
- Line pressure should be increased to compensate for unusually long air hoses (over 8 metres). The minimum hose diameter should be 1/4" I.D. and fittings must have the same inside dimensions.



Caution: Ensure the air supply is clean and does not exceed 6-8 bar while operating the oil drainer. Too high an air pressure and unclean air will shorten the product life due to excessive wear, and may be dangerous causing damage and/or personal injury.



OPERATING INSTRUCTIONS...cont

GENERATING THE VACUUM

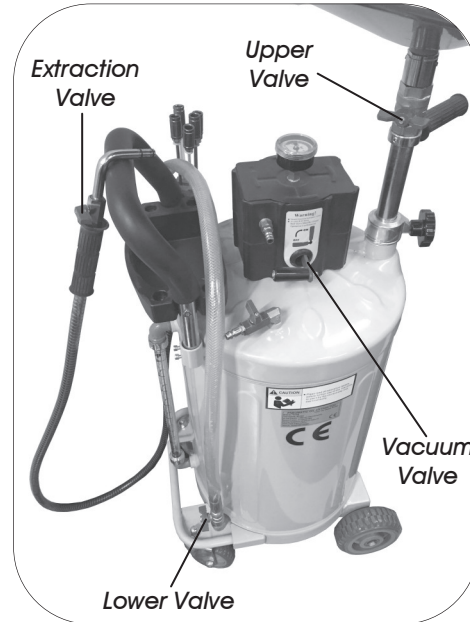


Note: The operating air pressure should be between 6 and 8 bar, and an air consumption of 150L/min.

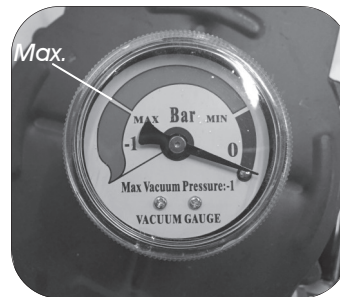
- Ensure all 4 valves are closed (see right).
- Connect the air supply onto the vacuum valve air inlet (see right), turn the vacuum valve to on.
- Gradually turn on your compressor air supply.



Vacuum Air Inlet Valve



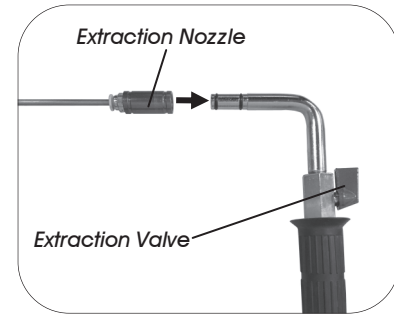
- When the needle on the vacuum gauge reaches max. turn the compressor air supply off, this will take 4-5 mins approx.



Note: If continuous vacuum is required then leave the air connected.

OPERATING INSTRUCTIONS...cont

- Fit the extraction nozzle (which fits best into the engine) onto the extraction gun (see right)
- Insert the end of the extraction tube into the engine hole.
- Turn on the extraction valve, this will start to extract the oil from the engine.
- Once all the oil has been extracted turn the extraction valve off.



Note: Never hold the hose whilst extracting, this can get very hot and could lead to burns, always hold it by the rubber handle.



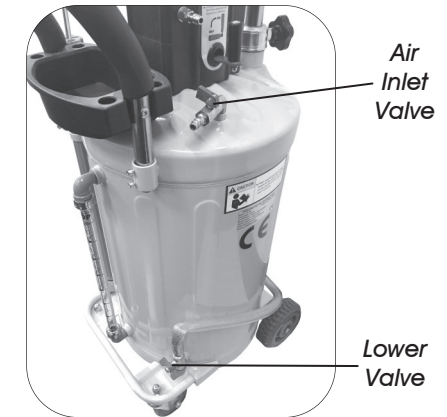
Note: Maximum oil temperature to be extracted is 60°C, never exceed this.

EMPTYING THE TANK

The tank gauge (see below left) will indicate when the tank needs to be emptied, see below on how to empty the tank.



Tank Gauge



Note: The upper valve must be closed at all times whilst emptying the tank.