



Please dispose of packaging for the product in a responsible manner. It is suitable for recycling. Help to protect the environment, take the packaging to the local amenity tip and place into the appropriate recycling bin.



Never dispose of electrical equipment or batteries in with your domestic waste. If your supplier offers a disposal facility please use it or alternatively use a recognised re-cycling agent. This will allow the recycling of raw materials and help protect the environment.

1HP Dust Collector



01932

**FOR HELP OR ADVICE ON THIS PRODUCT PLEASE CONTACT YOUR DISTRIBUTOR,
OR SIP DIRECTLY ON:
TEL: 01509500400
EMAIL: sales@sip-group.com or technical@sip-group.com
www.sip-group.com**

DECLARATION OF CONFORMITY

Declaration of Conformity

We

SIP (Industrial Products) Ltd
Gelders Hall Road
Shepshed
Loughborough
Leicestershire
LE12 9NH
England

As the manufacturer's authorised representative within the EC
declare that the


1HP Dust Collector - SIP Part. No. 01932

Conforms to the requirements of the following directive(s), as indicated.

2006/42/EC	Machinery Directive
2006/95/EC	Low Voltage Directive
2014/30/EU	EMC Directive
2011/65/EU	RoHS

And the relevant standard(s), including:

EN 60335-2-69:2009
EN 60335-1+A1:2010
EN 62233:2008
EN 55014-1+A2:2011
EN 55014-2+A2:2008
EN 61000-3-2+A2:2009
EN 61000-3-3:2013

Signed: 

Mr P. Ippaso - Managing Director - SIP (Industrial Products) Ltd
Date: 29/10/2014.



Page No.	Description
4.	Safety Symbols Used Throughout This Manual
4.	Safety Instructions
8.	Electrical Connection
9.	Guarantee
9.	Contents & Accessories
10.	Technical Specifications
11.	Getting to Know Your Dust Collector
12.	Assembly Instructions
14.	Operating Instructions
14.	Maintenance
15.	Exploded Diagram
16.	Parts List
19.	Declaration of Conformity

SAFETY SYMBOLS USED THROUGHOUT THIS MANUAL



Danger / Caution: Indicates risk of personal injury and/or the possibility of damage.



Warning: Risk of electrical injury or damage!



Note: Supplementary information.

SAFETY INSTRUCTIONS



IMPORTANT: Please read the following instructions carefully, *failure to do so could lead to serious personal injury and / or damage to the dust collector.*

When using electric tools, basic safety precautions should always be followed to reduce the risk of fire, electric shock and personal injury.

Read all these instructions before operating the tool and save this user manual for future reference.

SIP recommends that this tool should *not* be modified or used for any application other than that for which it was designed. It is designed for the collection of wood, or wood composite materials from machines such as sanders or planers etc. If you are unsure of its relative applications do not hesitate to contact us and we will be more than happy to advise you.

KNOW YOUR MACHINE: Read and understand the owner's manual and labels affixed to the tool. Learn its applications and limitations, as well as the potential hazards specific to this machine.

KEEP WORK AREA CLEAN AND WELL LIT: Cluttered work benches and dark areas invite accidents; Floors must not be slippery due to oil, water or sawdust etc.

DO NOT USE THE MACHINE IN DANGEROUS ENVIRONMENTS: Do not use power tools in damp or wet locations, or expose them to rain. Provide adequate space surrounding the work area. Do not use in environments with a potentially explosive atmosphere.

KEEP CHILDREN AND UNTRAINED PERSONNEL AWAY FROM THE WORK AREA: All visitors should be kept at a safe distance from the work area.

STORE TOOLS SAFELY WHEN THEY ARE NOT IN USE: All tools should be stored in a dry, locked cupboard wherever possible and out of the reach of children.

NOTES

PARTS LIST

Ref. No.	Description	SIP Part No.	Ref. No.	Description	SIP Part No.
1.	Fine filter bag (felt)	65923	22.	Washer M20	WD02-00414
	Filter bag (cotton)	67128	23.	Wheel	67132
2.	Upper retaining strap	67130	24.	Lower frame	WD02-00415
3.	Filter bag support	67131	25.	Collection bag support	WD02-00416
4.	Handle	WD02-00400	26.	Screw (M5x5)	WD02-00417
5.	Screw (ST4.8x30)	WD02-00401	27.	Centre panel	WD02-00418
6.	Coach bolt (M5x10)	WD02-00402	28.	Hose clamp	65918
7.	Washer M5	WD02-00403	29.	Collection Hose	06895
8.	Upper filtration housing	WD02-00404	30.	Bolt (M6x16)	PW01-00154
9.	Upper plate	WD02-00405	31.	Washer M6	PW01-00372
10.	Lower plate	WD02-00406	32.	Fan	WD02-00419
11.	Lower retaining strap	67129	33.	Bolt (M8x12)	PW01-00207
12.	Collection bag	62565	34.	Washer M8	PW01-00010
13.	Nut M5	WD03-00278	35.	Coach bolt (M5x20)	WD02-00420
14.	Lower filtration housing	WD02-00407	36.	Screw (ST4x10)	WD02-00421
15.	Side panel	WD02-00408	37.	Switch	62357
16.	Nut M8	WD02-00102	38-59.	Motor	WD02-00422
17.	Coach bolt (M8x20)	WD02-00409	39.	Motor fan cover	67160
18.	Rubber foot	WD02-00410	54.	Capacitor 10mf	WD02-00423
19.	Screw (M6x15)	WD02-00411	60.	Hose connector	WD02-00424
20.	Wheel cover	WD02-00412	61.	Screw (ST4x8)	WD02-00425
21.	Snap ring	WD02-00413	N/A.	Fine felt & poly bag set	65914

SAFETY INSTRUCTIONS...cont

WEAR THE CORRECT CLOTHING: Do not wear loose clothing, neckties, rings, bracelets, or other jewellery, which may get caught in moving parts. Non-slip footwear is recommended. Wear protective hair covering to contain long hair. Roll long sleeves up above the elbow.

USE SAFETY GOGGLES AND EAR PROTECTION: Wear CE approved safety goggles at all times; Normal spectacles only have impact resistant lenses, they are **NOT** safety glasses. A face or dust mask should be worn if the operation is excessively dusty and ear protectors (plugs or muffs) should be worn, particularly during extended periods of operation.

PROTECT YOURSELF FROM ELECTRIC SHOCK: When working with power tools, avoid contact with any earthed items (e.g. pipes, radiators, hobs and refrigerators, etc.). It is advisable wherever possible to use an RCD (residual current device) at the mains socket.

STAY ALERT: Always watch what you are doing and use common sense. Do not operate a machine when you are tired or under the influence of alcohol or drugs.

DISCONNECT THE MACHINE FROM THE MAINS SUPPLY: When not in use, before servicing and when changing accessories such as bags etc.

AVOID UNINTENTIONAL STARTING: Make sure the switch is in the **OFF** position before connecting the tool to the mains supply.

NEVER LEAVE THE MACHINE RUNNING / CONNECTED WHILST UNATTENDED: Turn off the machine and disconnect it from the mains supply between jobs. Do not leave the machine until it comes to a complete stop.

DO NOT ABUSE THE MAINS LEAD: Never attempt to move the machine by the mains lead or pull it to remove the plug from the mains socket. Keep the mains lead away from heat, oil and sharp edges. If the mains lead is damaged, it must be replaced by the manufacturer or its service agent or a similarly qualified person in order to avoid unwanted hazards.

CHECK FOR DAMAGED PARTS: Before every use of the machine, a guard or other part that is damaged should be carefully checked to determine that it will operate correctly and perform its intended function. Check for alignment of moving parts, free running of moving parts, breakage of parts, and any other conditions that may affect its operation. A guard or other part that is damaged should be correctly repaired or replaced by an authorised service centre unless otherwise indicated in this instruction manual. Have defective switches replaced by an authorised service agent. Do not use the tool if the switch does not turn it on and off.

KEEP ALL GUARDS IN PLACE: And in full working order.

USE ONLY RECOMMENDED ACCESSORIES: Consult this user manual for recommended accessories. Follow the instructions that accompany the accessories. The use of improper accessories may cause hazards and will invalidate any warranty you may have.

DO NOT OVERREACH: Keep proper footing and balance at all times.

USE THE RIGHT MACHINE: Do not use the machine or attachment to do a job for

SAFETY INSTRUCTIONS...cont

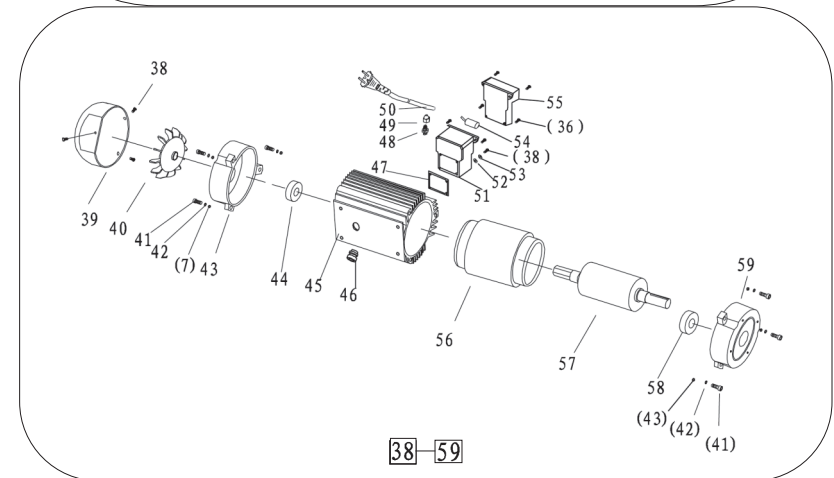
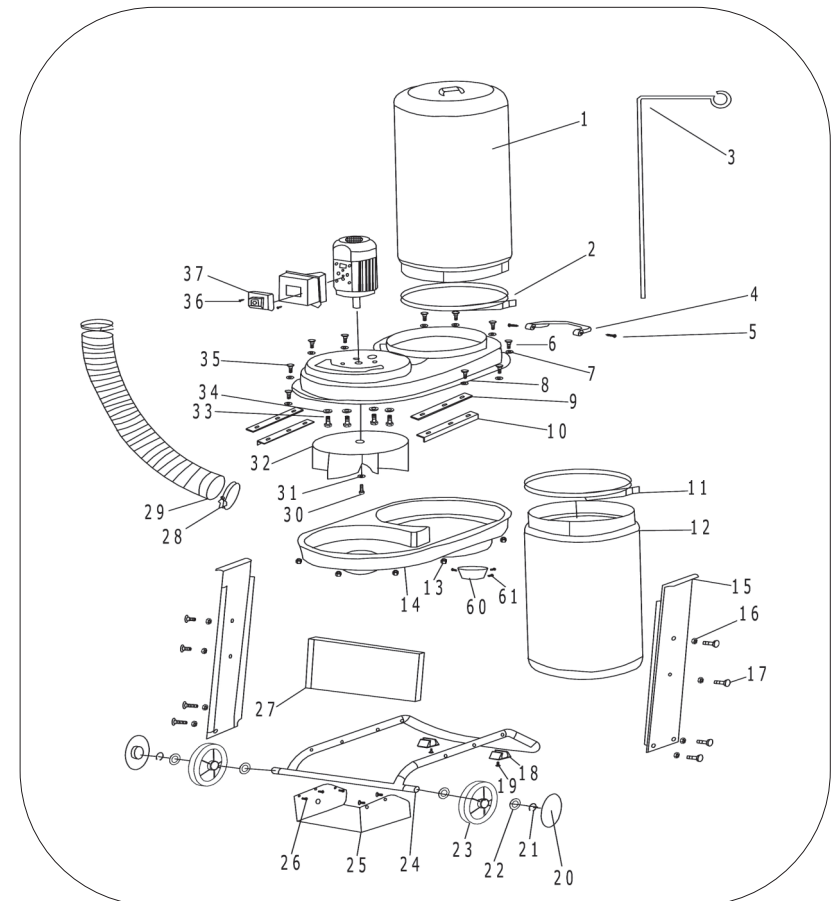
which it was not designed.

DO NOT OVERLOAD THE MACHINE: It will do the job better and more safely at the rate which it was designed.

DO NOT EXPOSE THE MACHINE TO RAIN OR USE IT IN WET CONDITIONS: Water entering the machine will greatly increase the risk of electric shock.

- For your safety and performance; remove the chippings and work debris etc. from inside the collection port before each operation.
- Stop operation immediately if you notice anything abnormal.
- Be alert at all times, especially during repetitive, monotonous operations. Don't be lulled into a false sense of security.
- Do not modify the dust collector to do tasks other than those intended.
- This dust collector is only designed to collect wood or wood composites; it is not designed to collect metal or similar.
- Never collect hot objects such as dust or ashes etc.
- Never allow large pieces of wood, or similar to go through the dust collector.
- Never operate the dust collector without all bags securely and correctly fitted.
- If the dust collector is used in a place of work all rules and laws etc. relating to the use of portable electrical appliances should be followed.
- The filtration housing contains a high speed fan that can amputate fingers, grab loose clothing and neckties, propel dust and chips of wood at high velocities. **DO NOT OPERATE WITHOUT ALL COVERS / GUARDS AND PARTS IN PLACE.**
- Do not attempt to clean the dust collector, remove the dust bags, or service the unit when the power is **ON**. Turn the dust collector **OFF** and disconnect the mains lead from the power supply and allow the internal fan to come to a complete stop prior to any adjustment, cleaning or maintenance.
- Static shocks are common in dry areas or when the relative humidity of the air is too low, The use of a humidifier in the work place will help raise the relative humidity, and may reduce static shocks.
- **DO NOT** use the dust collector near flammable or combustible liquids, gases, petrol, or any other types of fuels or liquid.
- Be aware what is likely to get sucked into the machine, avoid sucking up metal objects such as nails etc. This dust collector is designed for the sole purpose of collecting wood chippings or similar. Internal damage could occur if this rule is not followed.
- Use the dust collector on a stable, level surface.
- Position the hose and mains lead away from heavy traffic areas.
- **DO NOT** use the dust collector without the dust / filter bag and the chip bag in place.
- Always ensure the mains supply matches what is written on the specification plate of the dust collector (or in this manual), and that the supply is correctly earthed.
- Use only the correct heavy duty bags when replacing the filter or the collection bag.

EXPLODED DRAWING



OPERATING INSTRUCTIONS

Before using your dust collector:

- Learn the function and correct use of the on / off (NVR) switch.
- Read and understand all the safety instructions and operating procedures throughout this manual.

Before each use:

- Inspect your dust collector, if any parts are missing, damaged, bent, or fail in any way, or any electrical components do not work correctly, turn off the dust collector and remove the plug from the mains supply.
- Replace damaged, missing, or failed parts immediately.
- When cleaning the collection bags, always wear a dust mask and eye protection.
- Ensure all clamps, collection hose and bags, are secure.

- Connect the other end of the collection hose to your machine.
- To start the dust collector; press the green (I) button.
- To stop the dust collector; press the red (O) button.

Your SIP dust collector is fitted with a safety NVR (No Volt Release) switch. This means that if power is cut to the dust collector (such as in a power failure); the motor will not start to run once the power is returned without the operator following the above instructions to restart the dust collector.



Woodworking operations will cause dust to become airborne with the potential to be highly toxic; we always recommend wearing a face mask during these operations, as well as ensuring the area is well ventilated.

MAINTENANCE

This dust collector needs very little maintenance; A common sense approach should give you years of good service.

- Ensure all nuts / bolts etc. are tight before each use.
- Empty and clean bags regularly.
- Ensure that all hoses are clear from debris regularly.
- Always keep the motor free from contamination.

If your collection / filter bags become damaged they must be replaced.

SAFETY INSTRUCTIONS...cont

- **CAUTION:** Using this dust collector should help to keep airborne dust within acceptable limits, you must regularly monitor airborne dust and maintain your dust collector accordingly to avoid exceeding these limits. Each application is unique, your maintenance schedule must therefore be tailored to your specific use of this dust collector. Safety is a combination of common sense, staying alert, and knowing how your dust collector works.
- **DO NOT** use it to on workshop floors as a vacuum, floors may contain stones, nails, screws etc, the dust collector is only designed for wood and wood by-products.
- Be aware that wood dust is an explosive medium. Do not allow any 'naked' light source to occur anywhere near the machine, this includes cigarettes, matches, etc, and do not place the collector near any unprotected light bulbs, or other heat sources.
- If you are not using 'clear' collection hose, periodically remove the hose to check that the inlet to the machine is not getting restricted. (The safety guard grill of the inlet duct can be prone to blockage particularly if the operation produces large amounts chippings such as when the collector is connected to a planer or thicknesser.
- Keep the dust bag clean, the machine relies on its ability to 'blow' air through the dust bag, to generate good suction. If the cloth of the bag starts to clog, this reduces the air flow and hence the machine becomes less efficient.
- Empty the bag as often as possible (and is practical); as the bag fills up there is less free area of the bag to allow the air to flow through, again reducing the efficiency of the machine.
- Understand the operating environment; Before each use the operator should assess, understand and where possible reduce the specific risks and dangers associated with the operating environment. Bystanders should also be made aware of any risks associated with the operating environment.



Caution: If used incorrectly, woodworking machines can be dangerous; for this reason always comply with the safety instructions mentioned in this manual.



Caution: The warnings and cautions mentioned in this user manual can not cover all possible conditions and situations that may occur. It must be understood by the operator that common sense and caution are factors which cannot be built into this product, but must be applied.

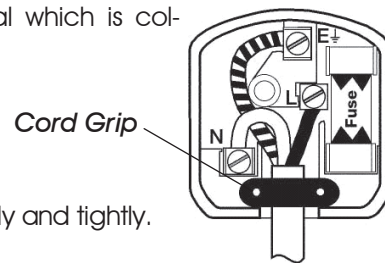
ELECTRICAL CONNECTION

This dust collector is fitted with a standard UK type 230v ~ plug. Before using the dust collector inspect the cable and plug to ensure that neither are damaged. If any damage is visible have the dust collector inspected / repaired by a suitably qualified person. If it is necessary to replace the plug a heavy duty impact resistant plug would be preferable.

The wires for the plug are coloured in the following way:

Yellow / Green	Earth
Blue	Neutral
Brown	Live

As the colours of the wires may not correspond with the markings in your plug, proceed as follows: The wire which is coloured blue, must be connected to the terminal marked with N or coloured black. The wire which is coloured brown, must be connected to the terminal, which is marked L or coloured red. The wire which is coloured yellow / green should be connected to the terminal which is coloured the same or marked.



Always secure the wires in the plug terminal carefully and tightly. Secure the cable in the cord grip carefully.



Warning: Never connect live or neutral wires to the earth terminal of the plug. Only fit an approved plug with the correct rated fuse. If in doubt consult a qualified electrician.



Note: Always make sure the mains supply is of the correct voltage and the correct fuse protection is used. In the event of replacing the fuse always replace the fuse with the same value as the original.



Note: If an extension lead is required in order to reach the mains supply; ensure that this too is rated for the correct voltage and fuse rating.



Note: The cross section of the extension lead should be checked so that it is of sufficient size so as to reduce the chances of voltage drops.

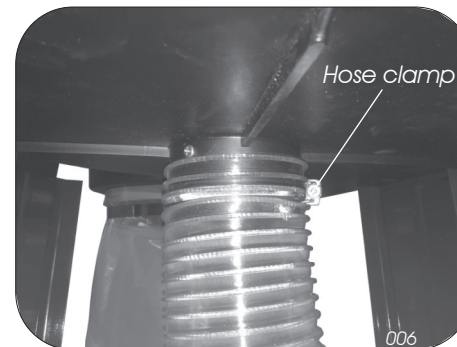
ASSEMBLY INSTRUCTIONS...cont



- Insert the filter bag support into the bore on top of the filtration housing, then slip the filter bag over the hook on the filter bag support (004).

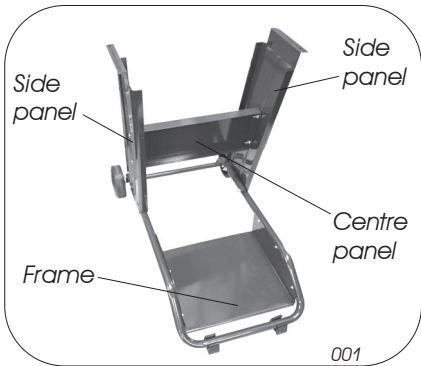


- Fit the collection bag to the lower part of the filtration housing and secure in place with the lower retaining strap (005).



- Attach the collection hose to the lower part of the filtration housing and secure in place with the hose clamp (006).

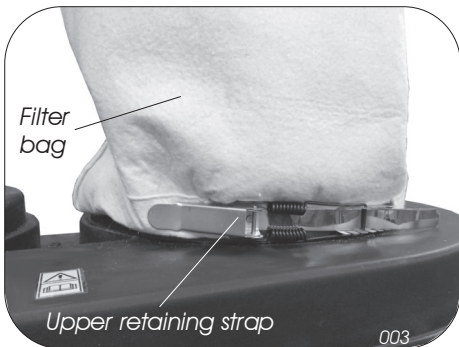
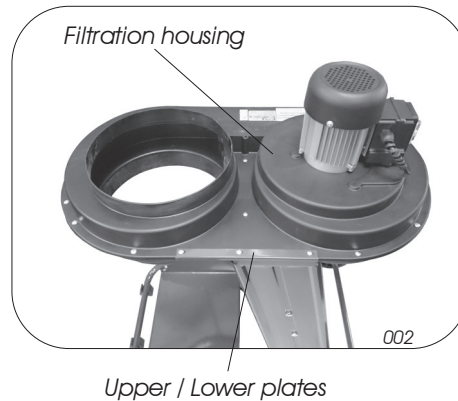
ASSEMBLY INSTRUCTIONS



- Attach both side panels loosely to the frame, then attach the centre panel to both side panels by using the M8x20 (x8) coach bolts and M8 nuts (x8) (001).

- Attach the filtration housing to both side panels by using the M5x20 coach bolts (x4), M5 washers (x4) and M5 nuts (x4), make sure that the upper and lower plates are fitted to each side of the filtration housing, proceed to tighten all nuts / bolts etc (002).

(note: you may have to remove the four bolts, nuts & washers from the filtration housing).



- Slide the upper retaining strap through the bottom of the filter bag, and secure onto the filtration housing (003).

GUARANTEE

This SIP dust collector is covered by a 12 month parts and labour warranty covering failure due to manufacturers defects. This does not cover failure due to misuse or operating the dust collector outside the scope of this manual - any claims deemed to be outside the scope of the warranty may be subject to charges including, but not limited to parts, labour and carriage costs.

Consumable items such as collection and filter bags are not covered by the warranty.

This dust collector is designed to **ONLY** collect wood or wood derived products.

In the unlikely event of warranty claims, contact your distributor as soon as possible.



Note: Proof of purchase will be required before any warranty can be honoured.

CONTENTS & ACCESSORIES

Motor (c/w filtration housing)	Frame Assembly (c/w wheels)	Side Panel (x2)
Centre Panel	Collection Hose 2.2 Metres	Filter Bag Support
Collection Bag	Filter Bag	Hose Clamp (x2)
Lower Retaining Strap	Upper Retaining Strap	Hose Connector
Coach Bolt M8x20 (x8)	M8 Nut (x8)	Coach Bolt M5x20 (x4)
Nut M5 (x4)	M5 Washer (x4)	



Note: The coach bolts M5x20, nuts M5 & M5 washers may already be attached to the motor housing.

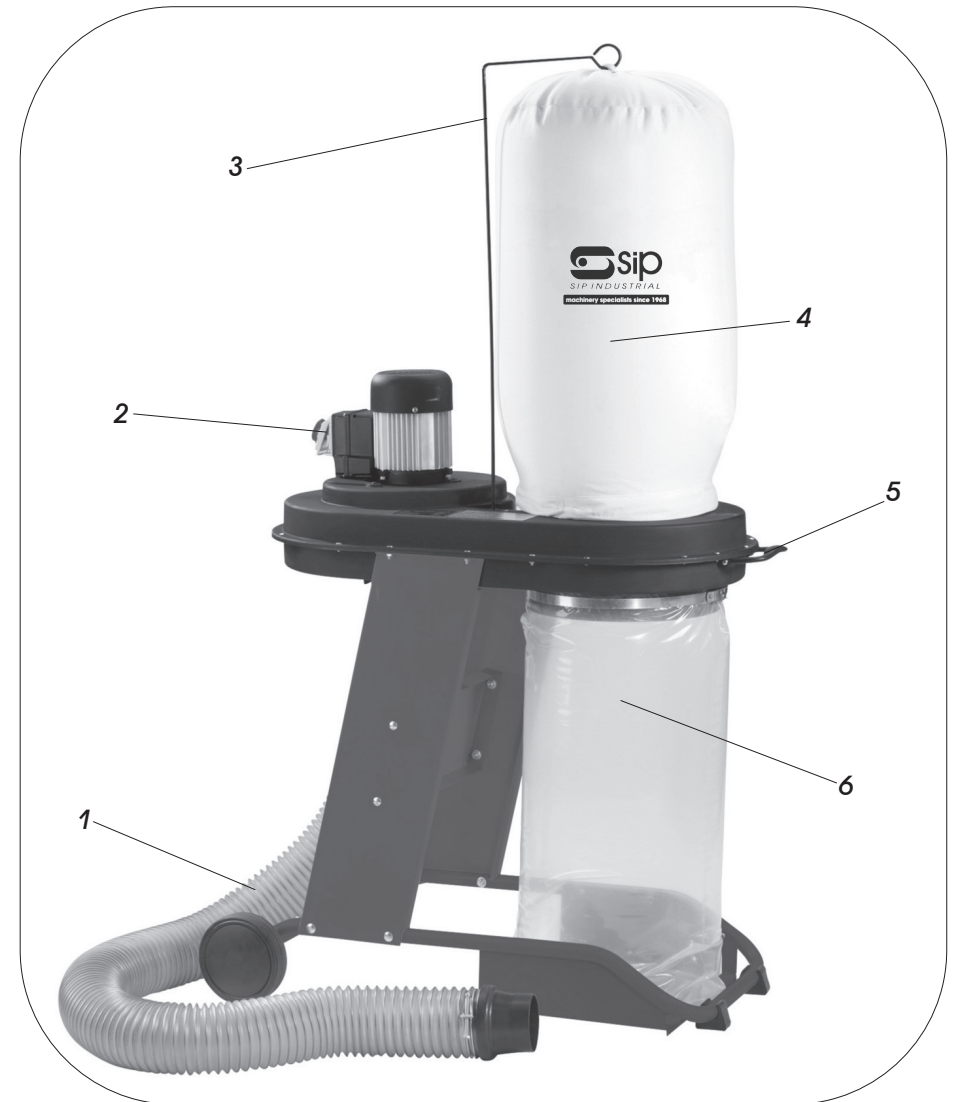


Note: If any of the above are missing or damaged, contact your distributor immediately.

TECHNICAL SPECIFICATIONS

Part Number	01932
Input Voltage	230V ~ 50hz
Power	750 W
Air Flow	1150 m ³ /Hour
Inlet Hose Ø	100 mm
Fan Ø	295 mm
Connection Hose Length (approx.)	2.2 Metres
Collection Bag Capacity	65 Litres
Packaged Dimensions (HxWxL)	380 x 540 x 890mm
Weight	25kgs

GETTING TO KNOW YOUR DUST COLLECTOR



Ref. No.	Description	Ref. No.	Description
1.	Collection Hose	4.	Filter Bag
2.	NVR Switch	5.	Handle
3.	Filter Bag Support	6.	Collection Bag